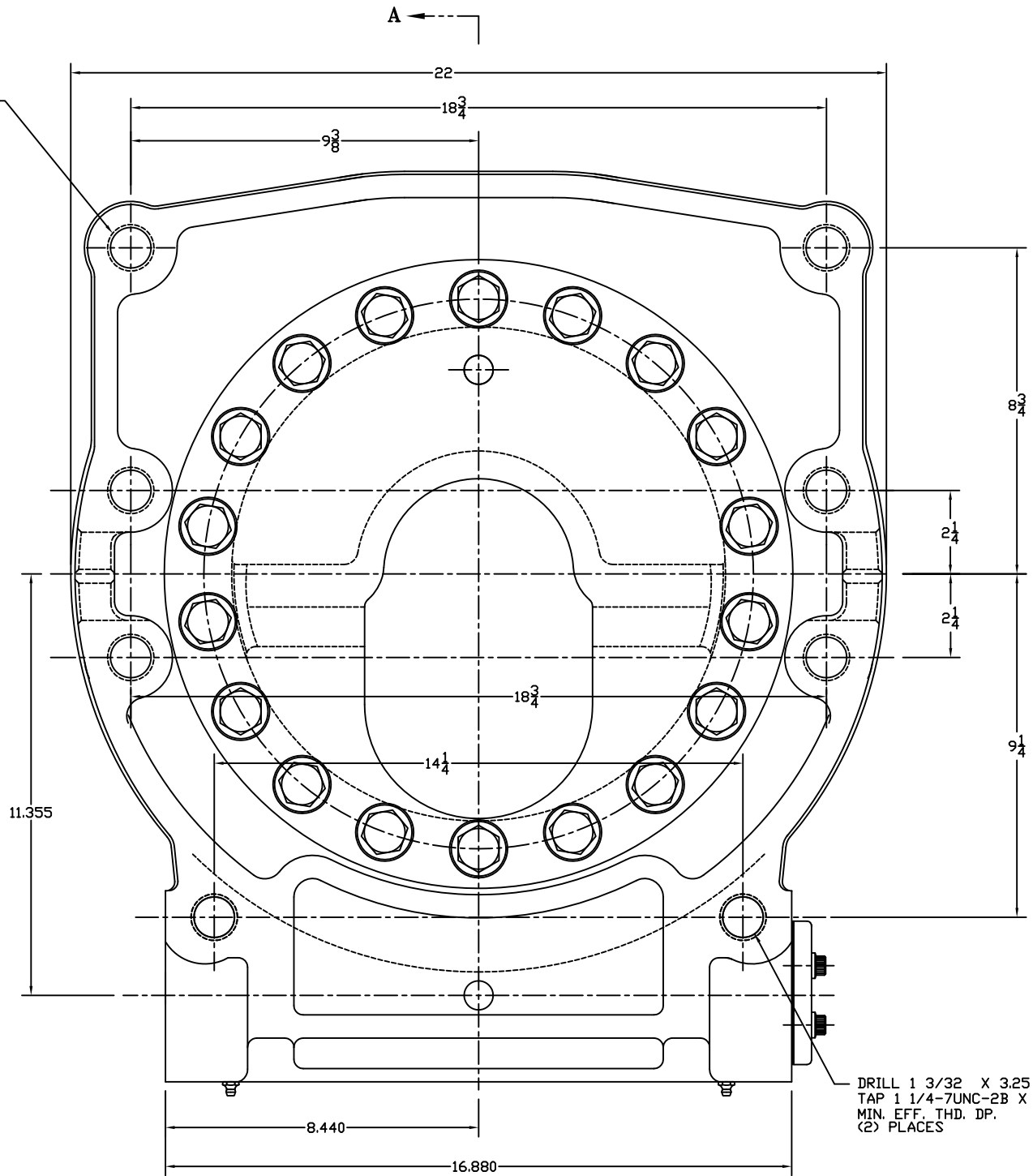
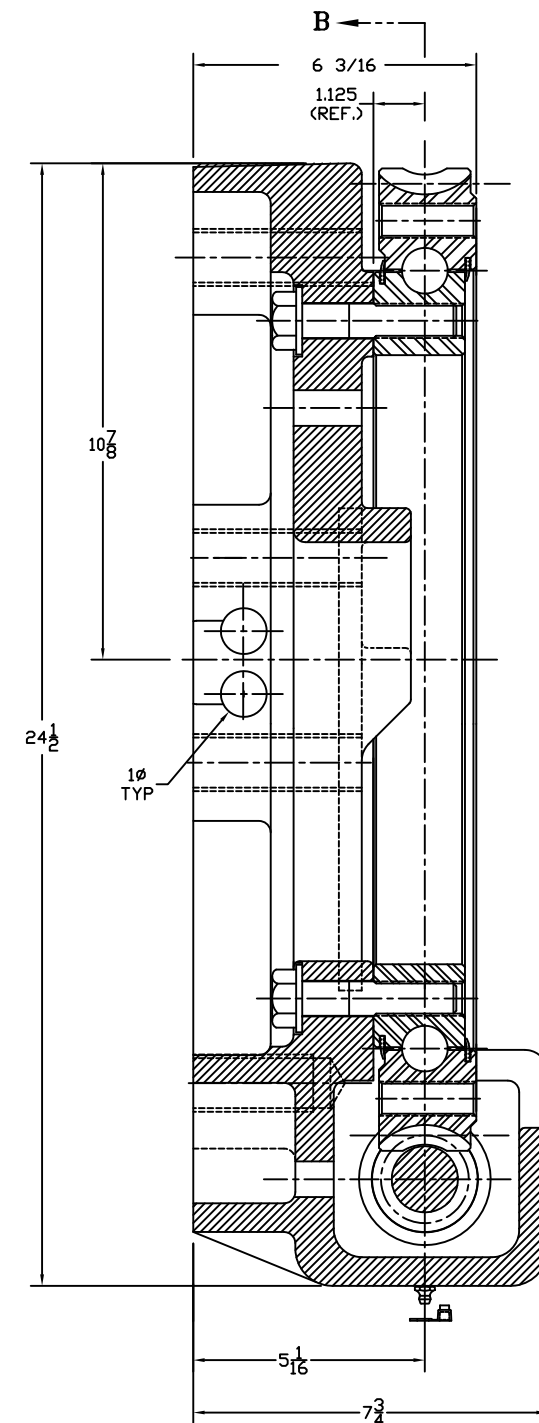


SECTION B-B

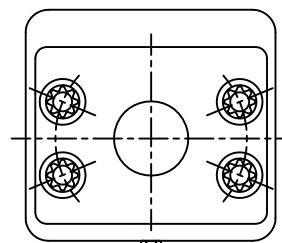
DRILL 1 3/32 X THRU
TAP 1 1/4-7UNC-2B THRU
(6) PLACES



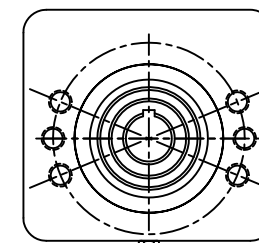
DRILL 1 3/32 X 3.25 DP.
TAP 1 1/4-7UNC-2B X 2.63
MIN. EFF. THD. DP.
(2) PLACES



SECTION A-A



VIEW D-D



VIEW C-C

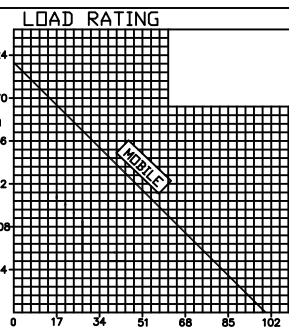
MOTOR MOUNT
SAE "A" (2) OR (4) BOLT MAGNETO MOUNT
(6) HOLES ON 4 3/16 BOLT CIRCLE DIA.
TAP 1/2-13 N.C. X 29/32 DP.
3.253/3.251 PILOT DIA.

MOTOR INPUT
1" DIA. WITH 1/4" KEY

OUTER RACE
(15) HOLES SPACED AS SHOWN,
21/32 DIA. DRILL THRU
TAP 3/4-10 N.C. THRU
ON A 19.188 BOLT CIRCLE DIA.

INNER RACE
(18) HOLES SPACED AS SHOWN
21/32 DIA. DRILL THRU
TAP 3/4-10 N.C. THRU
ON A 14.813 BOLT CIRCLE DIA.

ENGINEERING DATA
104:1 RATIO
45% THEORETICAL DYNAMIC EFFICIENCY
32% THEORETICAL STATIC EFFICIENCY
100,550 FT. LBS. MOMENT RATING
105,560 IN. LBS. TORQUE RATING
3.1 SAFETY FACTOR



NOTE:
1) LOADING POINTS ON OR BELOW THE LINE ARE WITHIN THE RATING.
2) RADIAL LOADS OF LESS THAN 5% OF THE THRUST LOADING CAN BE IGNORED.